

TEXAS ★ IMPACT

people of faith working for justice

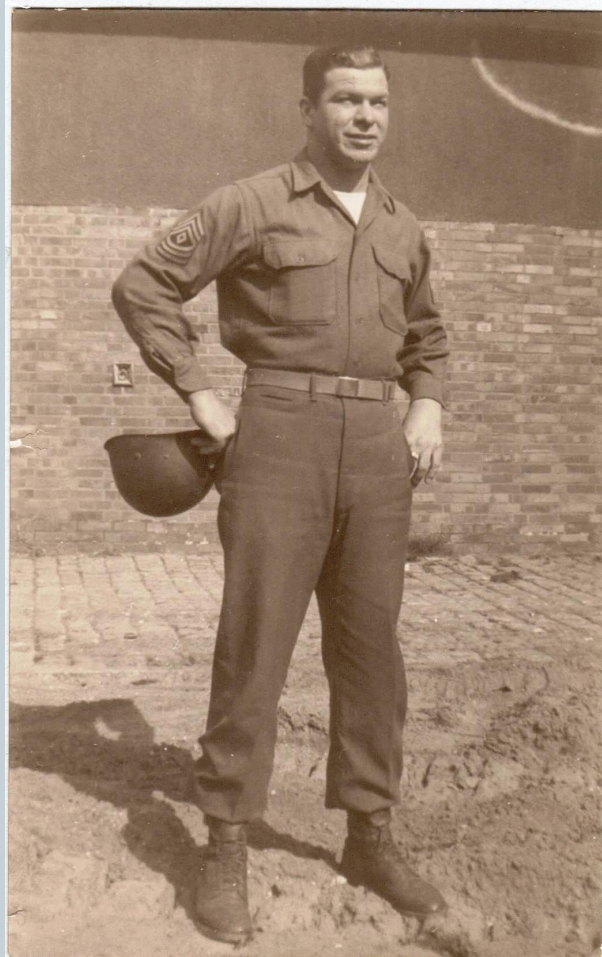


UMW 2022

JOSHUA HOUSTON
ADVOCACY DIRECTOR
JANUARY 22, 2022

Sgt. Bob Longshore

2



The Infrastructure of Democracy

3



Keep Calm Vote On

4



Washington D.C. on Jan 6, 2021

5



Texas Muslim Capitol Day 2015

6



E Pluribus Unum - Out of Many, One

7



“God’s will is being thwarted”

By Jeremy Schwartz, The Texas Tribune and ProPublica

8



Michele Carew, Elections Administrator

9



Michele Carew · 3rd

Elections Administrator at Hood County, Texas

Rockport, Texas, United States · [Contact info](#)

19 connections

[Connect](#)

[Message](#)

[More](#)



Hood County, Texas



**WEATHERFORD HIGH
SCHOOL**

Fmr. State Rep. Mike Lang

10

Rep. Mike Lang (R)

Last modified on: 02-09-2017 22:26:31

Committee Member

(0)

General Information

Profession: Law Enforcement

Home Town: Granbury

Birthdate: 08-29-1962

Spouse: Katie

[← Back to 0](#)



Hood County Clerk


11

→ ↻ https://www.co.hood.tx.us/directory.aspx?EID=46

🔍 Search

create an Account - Increase your productivity, customize your experience, and engage in information you care about. Sign In

◀ • 1866 • ▶




I Want To

- Agendas & Minutes
- Bond Page
- Burn Ban Info
- County Maps
- Employment
- Financial Transparency
- Tax Rate Information

[Home](#) > Staff Directory

Katie Lang

County Clerk
Title: County Clerk
Phone: (817) 579-3222 ext 5621 or 6010
klang@co.hood.tx.us



[Return to Staff Directory](#)

Ms. Carew Resigned

12

https://www.texastribune.org/2021/10/12/hood-county-elections-administrator-trump/

Abortion Law Voting by Mail Evictions Voting in 2022 Coronavirus Tracker


THE TEXAS TRIBUNE-PROPUBLICA INVESTIGATIVE UNIT

Trump won Hood County in a landslide. His supporters still hounded the elections administrator until she resigned.

Michele Carew, an elections administrator with 14 years of experience, has resigned after a monthslong campaign by Trump loyalists to oust her. "I'm leaving on my own accord," she said.

BY JEREMY SCHWARTZ, THE TEXAS TRIBUNE AND PROPUBLICA OCT. 12, 2021 5 AM CENTRAL

[f](#) [twitter](#) [email](#) COPY LINK REPUBLISH



Baselessly Prosecuting Election Administrators

13

https://www.texastribune.org/2021/12/20/texas-ken-paxton-travis-county-elections/ Paxton prosecute Travis Dana

Abortion Law Voting by Mail Evictions Voting in 2022 Coronavirus Tracker

TEXAS 2020 ELECTIONS

Amid Texas GOP's effort to question electoral integrity, attorney general tried to indict Travis County elections chief

The effort to charge Travis County Clerk Dana DeBeauvoir came at a time when many Texas Republicans questioned the integrity of last year's election despite there being no evidence of widespread voter fraud.

BY REESE OXNER DEC. 20, 2021 7 PM CENTRAL

f [Twitter] [Email] COPY LINK REPUBLISH



Solutions

14



Election Administration

15



People Get Ready

Preparing to Help Your County Administer Elections



TEXAS ★ IMPACT
people of faith working for justice

Changes at the Texas Secretary of State

16

You Retweeted



Scott Braddock
@scottbraddock



The League of Women Voters asked the @TXsecofstate for 2000 voter registration forms. The SOS said they'd send *50*. Houston Mayor @SylvesterTurner slammed the SOS for it. The SOS said "we have no idea where Mayor Turner got the number 50 from." It came from the SOS (see email)

r's claim] is absolutely false
vidence that it is false," Taylo
ve no idea where Mayor Tur
number from, but it's clearl
re is evidence in the text of
ent from League of Women V
n VP of voter services."

Dear SOS office,

Would you please send me 2000 mail in voter registration forms as soon as possible?

Thank you very much.

Thank you for contacting our office. Due to extenuating circumstances beyond our control we are unable to provide this volume of applications at this time. We are working diligently to fulfill all requests with a reasonable amount given the current circumstances. We will be happy to send you 50 voter registration applications. The best way to request applications is

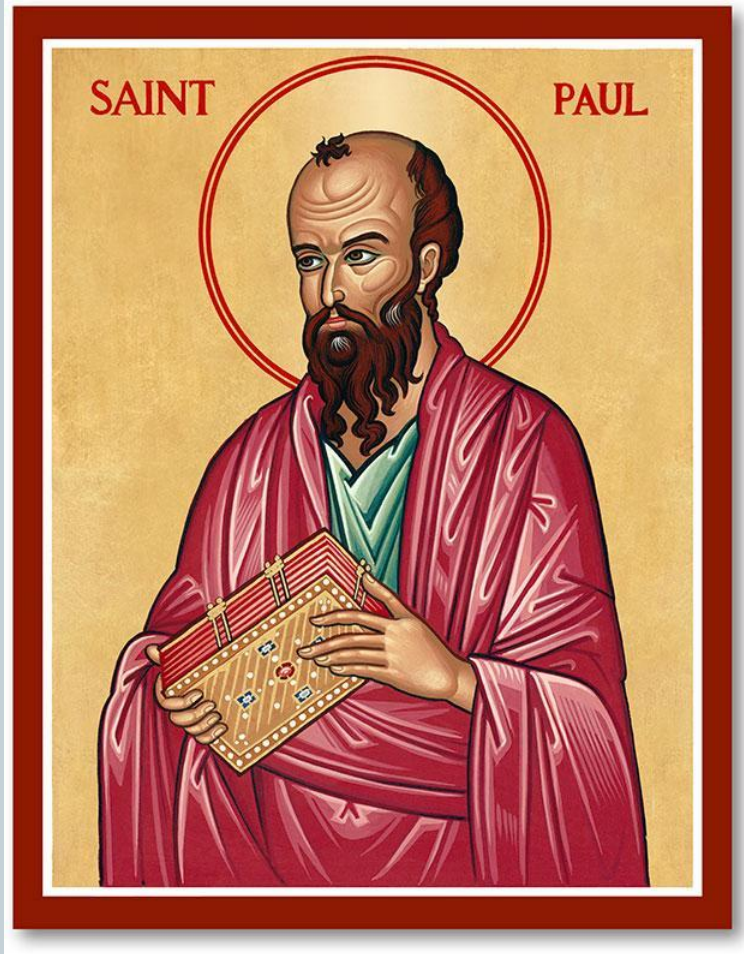
#1 Need of Counties = Poll Workers

17



St. Paul

18



Poll Monitors

19



Helping People Vote


20



Literacy Tests

21

The Rise and Fall of
Jim Crow

close 

1965 ALABAMA LITERACY TEST

QUESTIONS ANSWERS

Text courtesy Kids Voting USA.

1. Which of the following is a right guaranteed by the Bill of Rights?

Public Education

Employment

Trial by Jury

Voting

2. The federal census of population is taken every five years.

True False

3. If a person is indicted for a crime, name two rights which he has.

4. A U.S. senator elected at the general election in November takes office the following year on what date?

5. A President elected at the general election in November takes office the following year on what date?

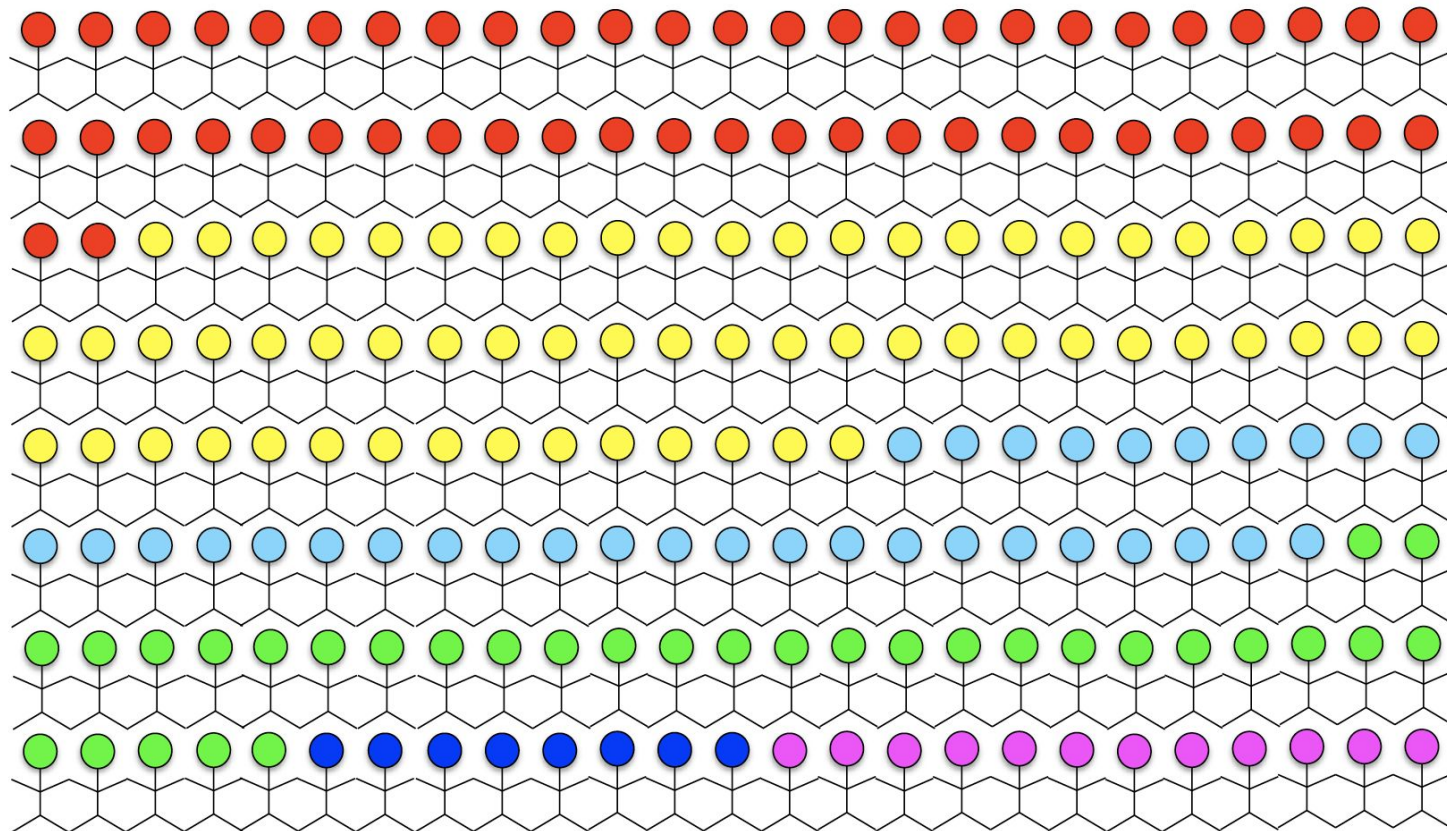
Solutions to the 87th Legislature

22



Texas's Voting Age Population

23



- | | |
|--|---------------------------------|
| ■ Unregistered voting age population | ■ November only voters |
| ■ Registered, but do not vote | ■ Primary voters (both parties) |
| ■ Presidential only voters (avg. of 2010 & 2014) | ■ Run-off voters (both parties) |

Notable Primary Runoffs

24



U.S. Senator Ted Cruz
2012 = 631,812 votes
3.5% VAP

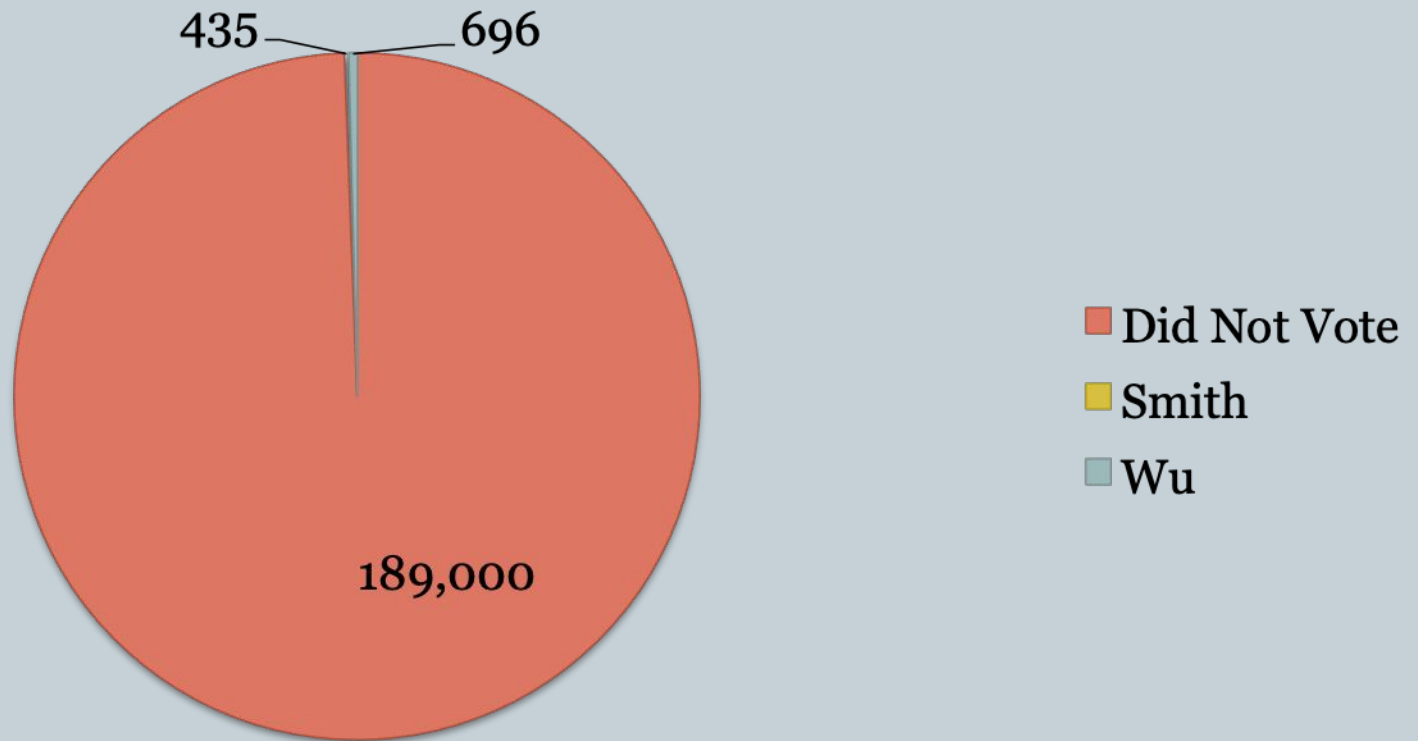


Lt. Gov. Dan Patrick
2014 = 489,586 votes;
2.6% VAP

Voters in the 2012 Runoff for HD 137

25

Voters



Assessing Down-Ballot Races

26

HOW TO BE A DOWN-BALLOT VOTER!

TEXAS ★ IMPACT

STEP ONE: WHERE DO YOU LIVE?

For state and federal offices in 2022, your best choice is the Texas Tribune "Locator." This online tool shows your district numbers pre- and post-redistricting. In most years, Who Represents Me? is a website administered by the State of Texas that shows your districts for federal and state offices.

For local government, check your county elections office website. Many counties have links that say something like "what's on the ballot." Often, you can find information organized by precinct after searching by your address or other personal info. Some county websites may not have this feature—in those cases, call the county elections office or search the websites of your county, city, or school district.

STEP TWO: IS THERE A RACE?

For federal, state, and county offices, candidates must file with the Texas Secretary of State, which maintains an easily sortable database of candidates. These offices are partisan, and candidates must win their party's primary.

City council and school board elections are less uniform. These offices are nonpartisan, and may be drawn into districts or at-large seats. Election dates vary by jurisdiction and usually occur in May or November. For cities, candidates file with the city secretary unless designated otherwise in a home rule city's charter. For school boards, candidates file with the secretary or presiding officer if there is no secretary.

The county elections office is the central repository of this information. If the county's website lacks detail, then Googling the city or school board's website or a phone call to any of these offices may also be effective.

STEP THREE: WHO ARE THESE CANDIDATES?

First, Google them. What pops up first? Do they have a website? Social media? What do the candidates say about themselves? Does the campaign look professionally run? Does it have a website? Notice the language the campaign chooses and the issues they highlight. Are they toying their party's line? Do they focus on issues where there's not party unity? Do they align with labels, or do they distance themselves from party dogma? Is the candidate's rhetoric divisive? Does it imply that other Americans are "the enemy"? Is that an approach you support?

Look at who endorses the candidates. Endorsements are formal, public statements of support by "interest groups." The "interests" of some groups are partisan or ideological. These groups typically support all candidates from one party, choosing the candidate that best fits their overall platform. Other "interests" are business or issue-oriented. For them, the candidate's policy positions are more important than "the letter after their name" (R or D).

Many issue groups follow "the friendly-incumbent rule": if an incumbent was helpful to the group's issue in past legislative sessions, the group supports the incumbent—even if the incumbent's party as a whole is not friendly on the issue. A fiscally conservative Democrat might win endorsement from a right-leaning business interest, or a Republican who supports big public programs might get support from the left.

Most Texas legislative races are decided in the primary because the district typically votes decisively for one party in the general election. This makes endorsements in the primary cycle especially telling. Organizations advocating on the same issue—like health care, gun laws, or the environment—may endorse different candidates in the primaries, even when the groups agree on policy. Voters should research the reputation, tactics, and funding of endorsing organizations, and investigate their differences of opinion.

Contributions are a form of endorsement. The Texas Ethics Commission regulates state-level campaign finance contributions and expenditures. Candidates must file reports which publicly disclose donor names. While loopholes exist, the filings provide a partial picture into who is supporting which candidate. Local elections are locally regulated, and most do not disclose political contributions or expenditures.

STEP FOUR: HOW CAN I HELP CANDIDATES I SUPPORT?

When you decide to back a candidate, you can't just root for them in your heart like you would for the Dallas Cowboys! Get on their email list and follow them on social media. Ask for a yard sign. Go to town halls and other events. Block, walk, and tell your neighbors about them. Host a house party, coffee, or other fundraising event.

Donating money is a simple and effective way to support a candidate. Even small donations count! Professional observers look at numbers of contributions, not just size, as a measure of community support. Your contribution to a candidate for state house race or local office counts more because those races typically are much less expensive.

STEP FIVE: HOW CAN MY WORK HAVE THE GREATEST IMPACT?

Join civic organizations and interest groups. Democracy is a team effort! And like any team, your civic team need to know what you are doing—even if you think it's insignificant. Tell folks that you serve as an election judge or volunteer deputy registrar, or that you volunteered for a campaign. Make sure groups like Texas Impact know you are an election mobilizer—ask to call on you for testimony and mentoring opportunities. Make sure the organizations to which you belong, know what you know about candidates and processes so all the members can benefit.

VOTE!
AQUI ★ HERE

Texas Tribune District Locator

27

https://apps.texastribune.org/features/2021/texas-redistricting-map/

Texas has new political maps. See which districts your home is in.

BY CARLA ASTUDILLO, MANDI CAI AND KALLEY HUANG
PUBLISHED: OCT. 22, 2021 UPDATED: DEC. 10, 2021

f

Texas lawmakers have redrawn political maps for the state's congressional, House, Senate and Board of Education districts. Republican Gov. Greg Abbott has signed these maps into law. However, the maps face at least five legal challenges, including one from the U.S. Department of Justice, based on claims that the newly drawn districts discriminate against voters of color. If you enter your address below, we'll customize this page so you can see how the new districts will affect your community. (Don't worry, we won't store your information.) Click on each map to explore the districts in more detail.

ENTER YOUR ADDRESS

Irving, TX

Not in Texas? Don't know where to start? We chose a few areas with big changes for you to explore. You can select one of four cities below to see their district changes.

Texas Secretary of State Candidate Filings

28

← → ↻ <https://www.sos.state.tx.us/elections/candidates/index.shtml> ☆ 🔍 secretary of state candidate filing → 📧 📄 📱 ☰ 🔔

Election Outlook: Monday, January 31, 2022 is the last day to register to vote for the March 1, 2022 Primary Election | [More about Identification Requirements for Voting](#) | [What's on the Ballot?](#) | [Am I Registered to Vote?](#) | [Find My Polling Place](#) | [Election Results](#) | [Voter Information](#) | [Voting Issues for Texas Evacuees Due to Natural Disasters](#) | [Texas Election Security Update](#)

[Home](#) | [About the Office](#) | [Press Releases](#) | [Site Index](#) | [Help](#) | [Contacts](#) | [En Español](#)

 **Texas Secretary of State**
John B. Scott

Search Go

[Elections](#) [Business Services](#) [Notary, Apostilles & Authentications](#) [Rules & Open Meetings](#) [International Relations](#) [Forms & Other Services](#)

VOTETEXAS.GOV 

[Current Election Information](#)
[Voter Registration Resources](#)
[Conducting Elections](#)
[Candidate Information](#)
[Officials and Officeholders](#)
[Election Results](#)
[Training and Educational Resources](#)
[Help America Vote Act \(HAVA\) Funding](#)
[Election Funds Management](#)
[Forms, Resources and Legal Library](#)
[Voting Systems](#)

Candidate Information

Current Election Information

- [Current Election Information](#)

Procedures for Candidates, 2019-2021

- [2022 Candidate's Guide - Running for State, District or County Office](#)
- [2020 Candidate's Guide – Running for Federal, State, District or County offices.](#)
- [Running for Local Offices](#)

Notable Links

- [Poll Watcher's Guide \(PDF\)](#)
- [Public Information Request \(PDF\)](#)
- [Election Forms](#)
- [Texas Ethics Commission - Campaign-Related Forms and Filing Requirements](#)
- [Federal Election Commission](#)
- [Election Officials and Officeholders](#)



SOS Filings Database

29

← → ↻ https://candidate.texas-election.com/Elections/getQualifiedCandidatesInfo.do ☆ 🔍 secretary of state candidate filing → 📧 📄 🏠 ☰ 📶

[Home](#) | [About the Office](#) | [Press Releases](#) | [Site Index](#) | [Help](#) | [Contacts](#) | [Web Survey](#) | [En Español](#)



Search Go

[Elections](#) [Business Services](#) [Notary, Apostilles & Authentications](#) [Rules & Open Meetings](#) [International Relations](#) [Forms & Other Services](#)

Candidate Information

Election Year	Election	Party
<input type="text" value="2022"/>	<input type="text" value="03/01/2022 -- 2022 MARCH 1ST REPUBLICAN PRIMARY"/>	<input type="text" value="-- Select Party --"/>
Office Type	Office Name	Status
<input type="text" value="-- Select Office Type --"/>	<input type="text" value="-- Select Office --"/>	<input type="text" value="-- Select Status --"/>

Qualified Candidates Information

- [SOSDirect -Business Filings](#)
- [Business Copies and Certificates](#)
- [Uniform Commercial Code](#)
- [Texas Businesses Against Trafficking](#)
- [Texas.gov](#)
- [VoteTexas.gov - Voter Information](#)
- [Register to Vote & Voter I.D.](#)
- [Website Policies](#)
- [Open Records](#)
- [Contacts](#)
- [Statewide Search](#)
- [Texas Homeland Security](#)
- [Where the Money Goes](#)
- [Fraud Reporting](#)
- [Texas Veterans Portal](#)

Definitions

30

- Swing District - a district where the prevailing party won by less than 55% of the vote.
- Dog Whistle - coded or suggestive language used to gain support from a particular group without provoking opposition. (i.e. the welfare queen)

Rage Farming: An Example

31



What is Rage Farming?

32

- Dog Whistle - coded or suggestive language used to gain support from a particular group without provoking opposition. (i.e. the welfare queen)
- Rage Farming - provokes opposition
 - driven by a perspective that other people who think differently are the enemy, rather than fellow Americans.”
 - Your angry retweet or quote tweet is the goal - it amplifies the message and reinforces tribal identity

WWJRF?

33



Texas Ethics Commission

34

The screenshot shows a web browser window with the URL <https://www.ethics.state.tx.us/search/cf/SimpleSearch.php>. The browser's address bar includes a search icon and the text "Texas Ethics Commission". The website's navigation menu includes "Resources", "Opinions/Statutes/Rules", "Filing Reports", "Training", "Forms/Instructions", "Search", and "Home". A large banner image features a clock face with the text "Next Commission Mtg: Feb 24 - 25, 2022" overlaid. Below the banner is a dark grey bar with the text "Search Campaign Finance Reports". The main content area is titled "Simple Search Selection" and includes a warning: "CSV downloads do not currently work with Google Chrome. Please use a different browser for downloading CSV files." There are five search buttons: "By Filer Name", "By Treasurer Name", "By Report Number", "By Filer ID", and "By Committee Acronym". A small "SOS" icon is visible in the top right corner of the content area. At the bottom, there are three paragraphs of text providing additional information about report disclosures and redactions.

Resources ▾ Opinions/Statutes/Rules ▾ Filing Reports ▾ Training ▾ Forms/Instructions ▾ Search ▾ Home

Next Commission Mtg: Feb 24 - 25, 2022

Search Campaign Finance Reports

Simple Search Selection

CSV downloads do not currently work with Google Chrome. Please use a different browser for downloading CSV files.

By Filer Name By Treasurer Name By Report Number

By Filer ID By Committee Acronym

Contributions or expenditures disclosed in special pre-election reports (formerly called telegram reports) and special session reports are also required to be disclosed in subsequent report(s), which may explain why a contribution appears multiple times in the query results.

As required by law, contributor addresses, other than city, state, and zip code, have been redacted from electronically filed reports. That information remains available on reports maintained in the commission's office.

Note. paper reports filed prior to 2008 are not available for pdf viewing using the link provided. Click the upper right hand help button for more information.

Thank You!

For more information, contact:

Joshua Houston

josh@texasimpact.org

(512)472-3903 x108