



Texas Impact is a statewide religious grassroots network whose members include individuals, congregations, and governing bodies of the Christian, Jewish and Muslim faiths.

**P R E S E N T S**  
**A P O D C A S T S E R I E S**

**REIMAGINING JUSTICE:  
HEALTH EQUITY AND SOCIAL  
DETERMINANTS OF HEALTH**



**Sponsored by Methodist Healthcare Ministries of South Texas, Inc.,  
and DentaQuest Partnership for Oral Health Advancement**

Through interviews with experts from Texas and around the country, Texas Impact's Scott Atnip unpacks how public policy and the circumstances we live in work to influence who has a fair shot at a healthy life...who has the deck stacked against them...and how we can work together to help all Texans lead their healthiest lives.

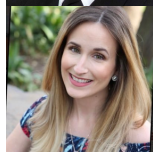
Reimagining Justice is a part of Weekly Witness, Texas Impact's weekly opportunity for Texans of faith to learn about important public policy issues through a faith lens, and find out timely opportunities to participate in the public policy process.



## Weekly Witness Host Scott Atnip Outreach Director, Texas Impact



Health Equity 101  
Taneika Duhaney, MHAP, US Navy



Social Determinants of Health  
Dr. Annaliese Cothron, American Institute of Dental Public Health



Maternal Mortality  
Rep. Shawn Thierry, State House District 146



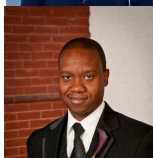
Kids' Health  
Laura Guerra-Cardus, M.D., Children's Defense Fund TX



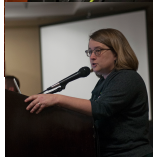
Oral Health  
Dr. Josefine Ortiz Wolfe, Texas Health Institute



Senior Health  
Scott Kibbe, Texas Health Care Association



National Concerns  
Scott Darius, Florida Voices for Health



Ecological Determinants of Health  
Bee Moorhead, Executive Director, Texas Impact



Health Equity in South Texas  
Jaime Wesolowski, Methodist Healthcare Ministries of South TX